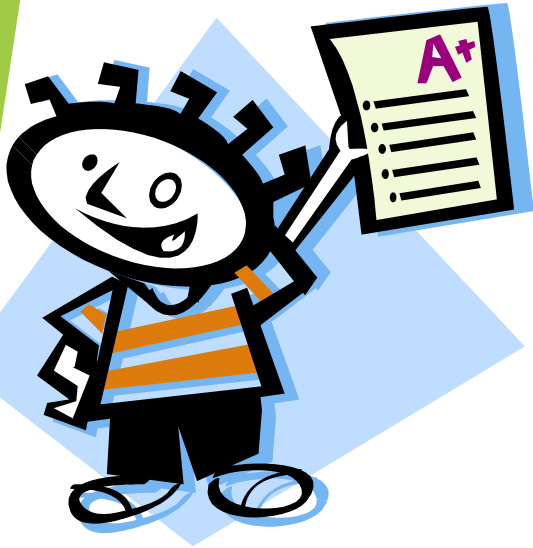




YEAR 6 2016-2017



- The Year 6 Team
- Overview of Year
- Overview of Curriculum
- Year 6 Expectations
- Behaviour and how this acted upon
- Trips, Shows and School Journey
- Timetable
- Homework
- Marking
- Walking home
- Equipment/ Must haves...
- Questions

The Year 6 Team

- Mrs. Smith, Mrs. Fewell and Mr. Dutton.
- Mrs. Wickens and Mrs. Masters.

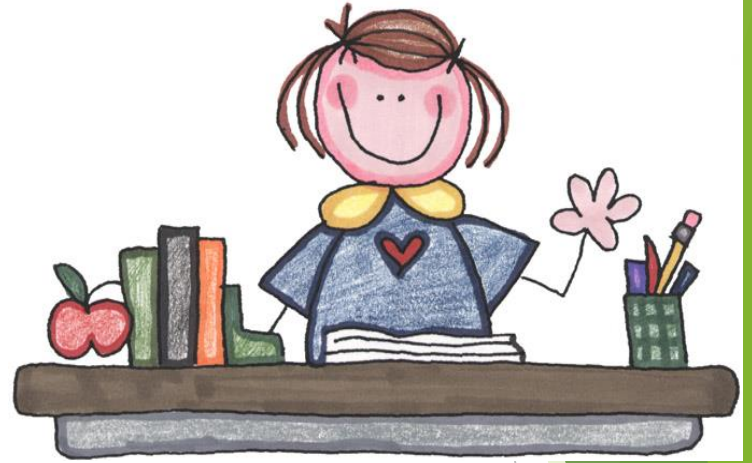
Overview of Year

- **Secondary Selection tests:** scores will be sent to parents on 13th October (email/online/post)
- **Individual Parent Consultations:** for those that are unsure about choices for secondary schools and would like to talk through your options with us (Wednesday 19th October). Letters to be forthcoming.
- **Visits to Secondary Schools:** please let us know if your child will be out of school. (Sep/Oct)
- **SCAF** (Secondary Common Application Form) ((School choices!)) to be returned to local authority or online.
"The national closing date for applications is 31 October 2016."
- **Letter RE:** allocated school will be emailed or posted on 1st March 2017 after 4pm.
- **SATs** WB 8th May

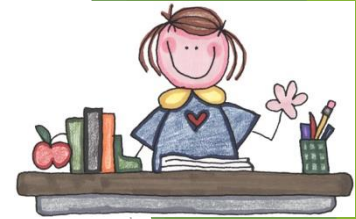
<p>Term 1 and Term 2</p>	<p style="text-align: center;">The Victorian Era</p> <ul style="list-style-type: none"> • Writing is based around the text: 'Street Child'. <ul style="list-style-type: none"> • PE - gymnastics/dance • Games - Hockey (shin pads if you have them)/Netball <ul style="list-style-type: none"> • Art - Morris and Lowry • RE - Sikhism/Christianity • Music - the Orchestra • Quest - Industrial revolution, Queen Victoria, Workhouses, Rich and poor, inventions and more. <ul style="list-style-type: none"> • Science - classification/Evolution
<p>Term 3 and Term 4</p>	<p style="text-align: center;">World War II</p> <ul style="list-style-type: none"> • Writing based around 'Boy in the Striped Pyjamas' <ul style="list-style-type: none"> • PE - gymnastics/dance • Games - tag rugby • Art - still life drawings/observational art <ul style="list-style-type: none"> • Science - light and electricity • Quest - evacuation, rationing, the blitz, Anne Frank
<p>Term 5</p>	<p style="text-align: center;">'In the News'</p> <p style="text-align: center;">All work will be based around what is occurring around the world in the news. (Plus SATs revision)</p>
<p>Term 6</p>	<p style="text-align: center;">Moving on Transition units</p>

Year 6 Expectations

- ▶ Smart appearance:
 - ▶ School uniform
 - ▶ School shoes
 - ▶ Shirts tucked in
- ▶ Role Models
 - ▶ Good manners
 - ▶ Behaviour
 - ▶ Support
- ▶ Hard Work - at all times. We cannot and will never fault hard work and effort.
- ▶ Pace of Work - we need to be upping the speed of work.
- ▶ Independence - more so now than in any other year group.
- ▶ Homework /Reading Diaries - given in every Monday morning. Both signed by an adult please.



Behaviour...



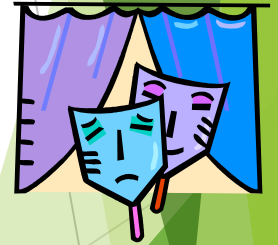
- ▶ Outstanding behaviour is expected at all times. This includes inside the classroom and around the school.
- ▶ Good behaviour will be rewarded. This will be anything from praise, house points, certificates and trophies.
- ▶ Inappropriate behaviour will be dealt with. This is not us picking on children. We do not pick on children. We do not 'not like children' and we do not hold grudges!!
- ▶ Please work with us!
- ▶ Most of the time, behaviour in this school is outstanding and Year Six should be leading from the front.
- ▶ We do track the behaviour of all of our children.

Trips, Shows and School Journey

- ▶ **Cycling Proficiency:** we are looking in to booking this for after Christmas
- ▶ **School Journey: Holland** (WB Mon 22nd May: before half term!)
- ▶ **Yr 6 Production** provisionally Tuesday/Wednesday 11/12th July
- ▶ **Sports Day** provisionally Friday 1st July
- ▶ **Leavers' Church Service**
(Thursday 20th July TBC)

Trips:

- ▶ Safety in Action (normally around March/April and normally £10)
- ▶ The Gurdwara in Gravesend (Normally about £4)
- ▶ We are trying to find something/someone to do with the Victorians
- ▶ We may visit Duxford War museum in Term 3/4



Sex and Relationship Education

- ▶ Will be happening towards the end of the year.
- ▶ We will invite parents to watch the DVD that we will be showing.
- ▶ Boys and girls will be split.
- ▶ We'll let you know of the date nearer the time.
- ▶ Our SRE policy is currently being reviewed and we will keep you informed of any major changes.

Timetable

	8.45-9.00	9.00-9.25	9.30-10.45		11.00-11.30	11.30-12.30		1.30-2.30	2.30-3.30	
M	Spelling: List of jumbles and decoding	Whole School Assembly	Maths Using a calculator	10.45-11.00: Break	English Activities Read chapter 3 plus questions for <u>chn</u>	English Ideas for writing from Ma	12.30-1.30: Lunch	Computing session 1	PE – gym session one.	3.30: Home
T	Thinking Activities	KS2 Singing Assembly	Maths X by 10, 100, 1000		English Activities Recap chapter 3	English Draft note from Ma		Science – classification What and why classify?	Art -	
W	10 a Day	Whole School Assembly	Maths Divide by 10, 100, 1000		English Write up final note			RE Sikhism (PPA)	Music The orchestra (PPA)	
T	Spelling – Crossword for list 2.	SPAG	Maths Order of operations		English Comprehension First News comprehension			Quest Victorians –	Art	
F	Y6 Assembly Duties	KS2 Celebration Assembly	Maths Order of operations		Spelling Test for week 2 words	English <u>SPaG</u> skills		Games Hockey session 2	Thinking Activities Recap of the week – passports.	

Homework

Please support your child with their homework.

Normally due in the same day the following week:

Monday: Spellings (don't need the sheet back)

Tuesday: SPaG

Wednesday: None

Thursday: Quest

Friday: Maths

Plus five reads recorded in reading diaries

(Again, our homework policy is being reviewed, so this may change - we'll let you know!)

Marking

- ▶ Highlighters (Tickled Pink and Green for Growth)
- ▶ Peer marking
- ▶ Individual marking in lessons
- ▶ Focus marking
- ▶ Self-assessment
- ▶ Children responding to marking

Thinking Schools

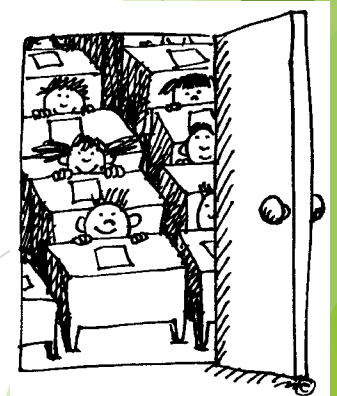
- ▶ We are still working towards gaining our 'Thinking Schools' accreditation this year - a journey that has been ongoing for the past few years.
- ▶ We have Thinking Passports that the children fill in, in which the children will reflect upon their week.
- ▶ A lot of assemblies will be based around critical thinking skills.
- ▶ We will be mixing year groups to have different discussions and debates.

Equipment...

- Blue handwriting pen - not biro.
- PE Kit (in all week, but PE will, for most of the year, be on Monday & Friday).
- Homework diaries should be with children in school every day.
- Reading Diaries signed by parents/carers; please-hand in on Mondays.
- Water bottles if wanted.

We are here

- ▶ If you have a problem please come and pop in on a Monday-make an appointment via the office or catch us after school if we are free.



Thank you for coming.

The background features abstract, overlapping geometric shapes in various shades of green, ranging from light lime to dark forest green. These shapes are primarily located on the right side of the slide, creating a modern, layered effect. The rest of the slide is a plain white background.